



# Ferryfield Newsletter

Spring 2007, Issue 4

**Ferryfield Playgroup**  
Castlehill  
Cupar, Fife  
KY15 4HA

**t: 01334 655066**  
**e: [ferryfield@btinternet.com](mailto:ferryfield@btinternet.com)**  
**w: <http://ferryfieldplaygroup.tripod.com>**

---

## Inside this issue:

Premises	1
Funded Places	1
Finance	2
Your Playgroup	3

## Castlehill Premises

There has been much uncertainty over the past few months regarding the premises occupied by the various members of the Castlehill Association, of which Ferryfield is one. Having received a notice to quit from Fife Council for the end of April, we started desperately scrounging around to find a new building to move to. However, we were very pleased to have recent assurance from the Council that our lease will be extended for at least two years, and that we will not have to move until suitable alternative premises are found. This is obviously a huge relief for everyone. Fife Council will be conducting a

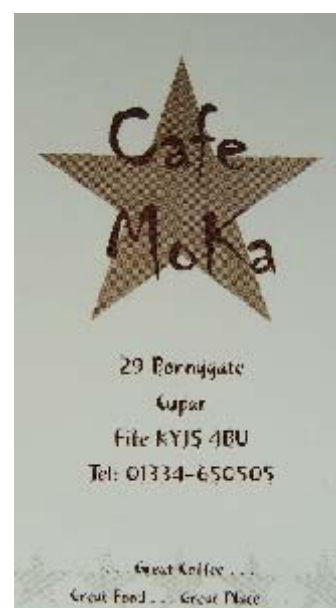
review of all their buildings in the area, and hopefully an appropriate one will be found that could act as a Community Centre for the whole of Castlehill Association. A list of requirements is being sought from all members—any suggestions welcome. Exploratory meetings between Cupar Pre-School, Triangle and Ferryfield playgroups have taken place to discuss the possibility of a merger. By working together we hope to assure the successful future of the invaluable community service we provide. We will let people know how this is progressing next academic year.

---

## Funded Places

Children who are 3 years of age are eligible for funded places, whether at Ferryfield or elsewhere. You are under no obligation to withdraw your child from playgroup halfway through the academic year (ie: January or April) if a place at nursery is offered to you; funded places can be accepted at playgroup just as easily. Ferryfield follows the same curriculum and conforms to the same standards as nursery schools. It is important for

parents to bear in mind that a funded morning place at Westfield does not guarantee a morning place for more than one term. It is not a requirement to send your child to nursery at all, although of course parents will do what is best for their child and themselves. If you are unsure of how your child will accept the move, please speak with your playleader.



**The printing of this newsletter is possible through the generous support of Café Moka**

## Finance & Fundraising

Ferryfield still faces an uncertain financial future. Every term we struggle to pay rent, gas and electricity bills, not to mention staff wages. The Manager and Committee do their best to prepare for the unexpected, but a lack of emergency funds (which had to be spent to cover other necessary costs) means we have to rely on immediately available monies. This means grants from funding bodies when possible and payments from Fife Council for funded children. However, these payments come at specific times of the year; the rest of the time we must and do depend on fundraising in order to stay open.

The Committee realises that many parents are hesitant or do not have the time to help fundraise, and that fundraising activities seem to be happening on a constant basis. Ideally Ferryfield should be running 2 or 3 major fundraising events per year that would bring in enough money to keep us ticking over. Unfortunately, the major events that were planned this year were failures. Last summer's fête finished at a loss. The Christmas ceilidh had to be cancelled. The coffee morning barely brought in enough to cover outlying costs. We therefore arrange activities we hope will cater to a wider range of people, and so far this has proven to be more successful. Giving the children Smarties tubs to fill with loose change has brought in over £150. Over

£250 worth of raffle tickets were sold. These two activities alone will have contributed to just over one week's pay for staff.

Two of the main reasons for loss of income are: funded children leaving before the end of the academic year (ie: January or April), and the session fee for non-funded children being more than £3 less than for funded children. Please see page 1 for comments on the former. The latter situation is being resolved by increasing the session fee to £3, including 20p snack fee, beginning Spring term; this will increase to £4 per session in August. This increase in fees has been agreed by all Cupar-based playgroups. A special general meeting was held on March 29th at Ferryfield at which the motion was passed; we hope these steps will provide a small measure of immediate financial stability.

Until we are financially secure however, the Committee would ask for your patience and continued participation in our fundraising. New ideas are always welcome; everyone is invited to attend Committee meetings to have their say. Please take advantage of this opportunity to get involved in your child's education.

### Raffle News:

The draw took place on March 30th. The top prize of a DVD player was won by Myrna. Congratulations to everyone who

won something.

### Red Nose Day:

Cupar Pre-School, Triangle and Ferryfield playgroups came together on March 16th in the Theatre Block to raise funds for Comic Relief. Lots of fabulous costumes were seen, and we raised £50 for the cause.

### Barnardos Toddle:

Ferryfield has registered to participate in the Barnardos Big Toddle, a national under 5's sponsored event that takes place in June. We are hoping to take the children to Haugh Park, but need a 1:2 adult/child ratio. Any volunteers welcome! Each participating child will receive a toddle pack which includes a medal, completion sticker and certificate.

### Casino Night:

A Casino night is planned for an evening in June. This was a highly successful venture last year, and we hope people will roll in and try their hand at poker, blackjack and other gambling temptations.

### Friends of Ferryfield Association:

Letters of invitation to join have now been sent out to parents of previous Ferryfield attendees. It is hoped that an annual subscription to the Association will encourage greater community involvement and increase awareness of what Ferryfield has to offer.

## Your Playgroup

As it is the start of a new term, and there will be many new faces at Ferryfield, we would like to re-introduce you to the staff and Committee who run the playgroup:

**Gill: Manager**



**Teresa: Senior Playleader**



**Lucy: Playleader**



**Fiona: Play Worker**



**Christine: Play Worker**



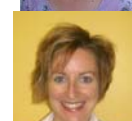
**Catherine: Committee Chair & Secretary**



**Tracy: Rota Secretary**



**Paula: Supplies**



**Claire: Co-opted Fundraising Coordinator**



**Sara: Treasurer** (photo n/a)

Every effort is made to make parents aware of Ferryfield news and events. The website, newsletter and various letters sent home with parents all aim to keep people informed. Please

note, however, that it is ultimately the *parents' responsibility to ensure they keep up-to-date with the latest news and information*. There is a notice board on the wall directly opposite the entrance with posters, the duty rota, recent notices and other essential information. A portion of his notice board will be moved into the play room soon after the start of term in order to make accessing this information easier and more convenient. It is also intended to print out urgent notices on coloured paper to attract attention.

We would like to remind all parents and carers that they are welcome to attend playgroup with their child for as long or as short a time as you or they wish. We operate an open doors policy, which means that parents are welcomed and encouraged to drop by at any time to see how things are and interact with the children. It's also an excellent way to see how your child is settling in and discuss their progress with his/her key worker.

Ferryfield offers Wraparound Care facilities. Early morning sessions begin at 8:45 until 9:15; unfortunately we have had to cancel these Early-Risers sessions temporarily, as there wasn't enough demand to keep it viable. However, if enough notes of interest are made, the session could be launched again. We also run Lunch Club

on Monday, Tuesday and Thursday from 11:45 am to 2:30 pm. Parents who have not taken advantage of Lunch Club before are welcome to a one-day free trial. Please ask Gill for details. (Please note fees are payable for both Early-Risers and Lunch Club—ask staff for details and/or application forms).

Finally, the staff and children of Ferryfield would be very pleased to invite special guests to visit them. If you know of a singer, dancer, musician, policeman, fireman, doctor, electrician, gardener or other professional with a few moments to spare, we would love to hear from you. Expanding knowledge and creating a greater understanding of the world and its opportunities is more fun when people take the time to explain what it's all about.

**Have a question?**

- **Drop In**
- **Call**
- **Email**
- **Visit the website**